

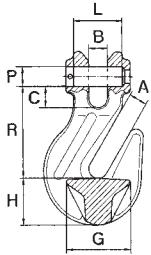


WEISSENFELS



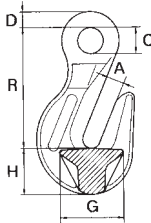
Chain Sling Components – Alloy Grade 80 and Grade 100

Clevis Cradle Grab Hook (G80 & G100)



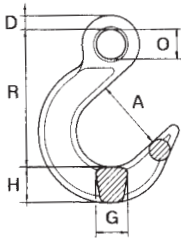
Stock No G80	Stock No G100	Chain Size	WLL Lbs* Grade 80	WLL Lbs* Grade 100	Dimensions in Inches							WT. EA. LBS
					A	B	C	G	H	R	PxL	
WA.89	WA89-10	1/4(6mm)	2,460	3,050	0.31	0.28	0.33	0.94	0.75	1.77	.29x.65	0.22
WA.90	WA90-7-10	9/32	3,500	4,300	0.39	0.35	0.39	1.18	0.94	1.97	.35x.89	0.59
WA.90	WA90-8-10	5/16	4,500	5,700	0.39	0.35	0.39	1.18	0.94	1.97	.39x.89	0.59
WA.91	WA91-10	3/8	7,100	8,800	0.51	0.51	0.55	1.73	1.22	2.83	.39x.91	1.65
WA.92	WA92-10	1/2	12,000	15,000	0.67	0.67	0.67	2.09	1.50	3.46	.51x1.24	2.97
WA.93	WA93-10	5/8	18,100	22,600	0.79	0.83	0.79	2.52	1.73	4.02	.63x1.65	5.95
WA.94		3/4	28,300		0.94	0.94	0.94	3.35	2.09	4.61	.83x2.03	9.02
WA.95		7/8	34,200		1.02	1.02	1.02	3.82		5.47	1.02x2.83	12.44

Eye Cradle Grab Hook (G80 & G100)



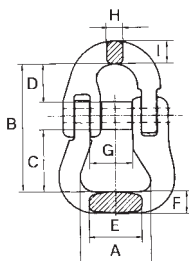
Stock No G80	Stock No G100	Chain Size	WLL Lbs* Grade 80	WLL Lbs* Grade 100	Dimensions in Inches						WT. EA. LBS
					A	D	G	H	O	R	
WA.40	WA40-10	9/32-5/16	4,500	5,700	0.39	0.39	1.18	0.94	0.63	2.36	0.51
WA.41	WA41-10	3/8	7,100	8,800	0.51	0.43	1.73	1.22	0.83	3.15	1.30
WA.42	WA42-10	1/2	12,000	15,000	0.67	0.63	2.09	1.50	1.02	4.09	2.73
WA.43	WA43-10	5/8	18,100	22,600	0.79	0.75	2.52	1.73	1.18	4.49	4.42
WA.44		3/4	28,300		0.91	0.87	3.35	2.09	1.42	5.51	6.60
WA.45		7/8	34,200		1.02	0.98	3.82	2.44	1.50	6.54	11.00
WA.46		1	47,700		1.18	1.18			2.17	8.27	21.57
WA.47		1-1/4	72,300		1.54	1.57			2.36	9.45	41.38

Eye Foundry Hook (G80)



Stock No	Chain Size	WLL Lbs* Grade 80	Dimensions in Inches						WT. EA. LBS
			A	D	G	H	O	R	
WA.50	9/32-5/16	4,500	2.52	0.43	0.98	1.14	0.94	5.16	2.02
WA.51	3/8	7,100	2.99	0.55	1.26	1.38	1.22	6.22	3.90
WA.52	1/2	12,000	3.50	0.67	1.50	1.57	1.54	7.52	6.21
WA.53	5/8	18,100	4.02	0.91	1.77	1.89	1.26	8.07	11.07
WA.54	3/4	28,300	4.49	0.98	2.01	2.13	1.57	9.25	16.73
WA.55	7/8	34,200	5.00	1.18	2.56	2.83	1.85	10.43	30.33
WA.56	1	47,700	5.35	1.34	2.83	3.15	2.13	12.01	42.28
WA.57	1-1/4	72,300	5.98	1.46	3.27	3.66	2.36	12.87	50.62

Web/Round Sling Connector (G80)



Stock No	Chain Size	WLL Lbs* Grade 80	Dimensions in Inches									WT. EA. LBS
			A	B	C	D	E	F	G	H	I	
WRS.10	3/8	7,100	1.97	3.19	1.54	1.18	0.83	0.63	0.91	0.51	0.51	1.10
WRS.13	1/2	12,000	2.36	4.09	2.05	1.42	1.06	0.79	1.10	0.67	0.75	2.43